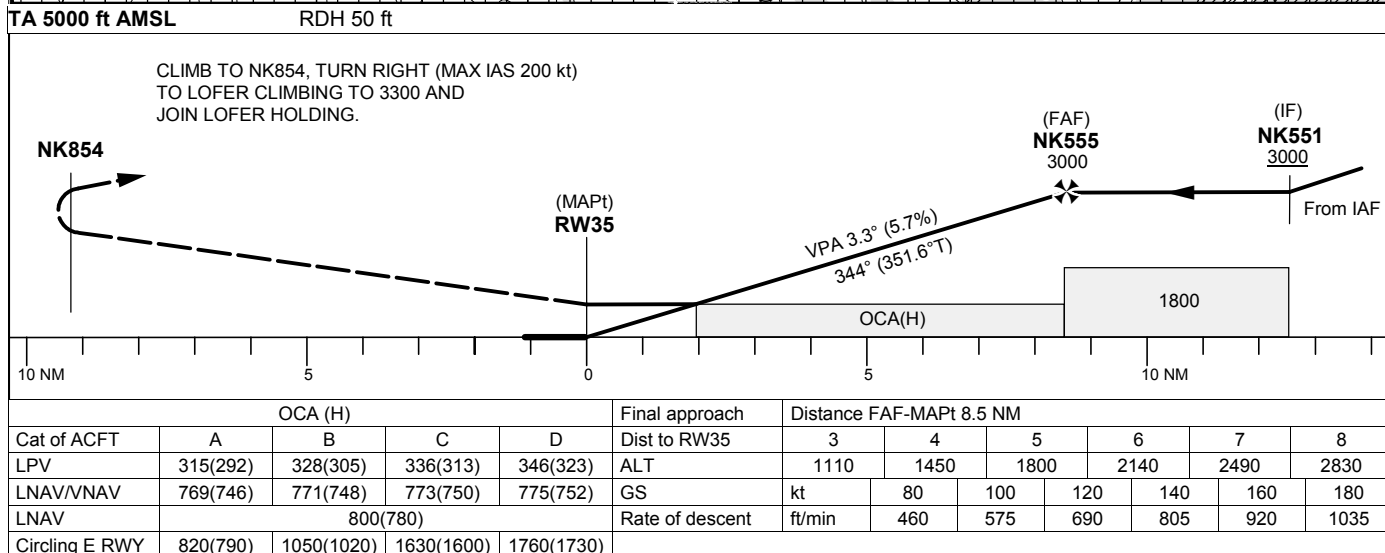
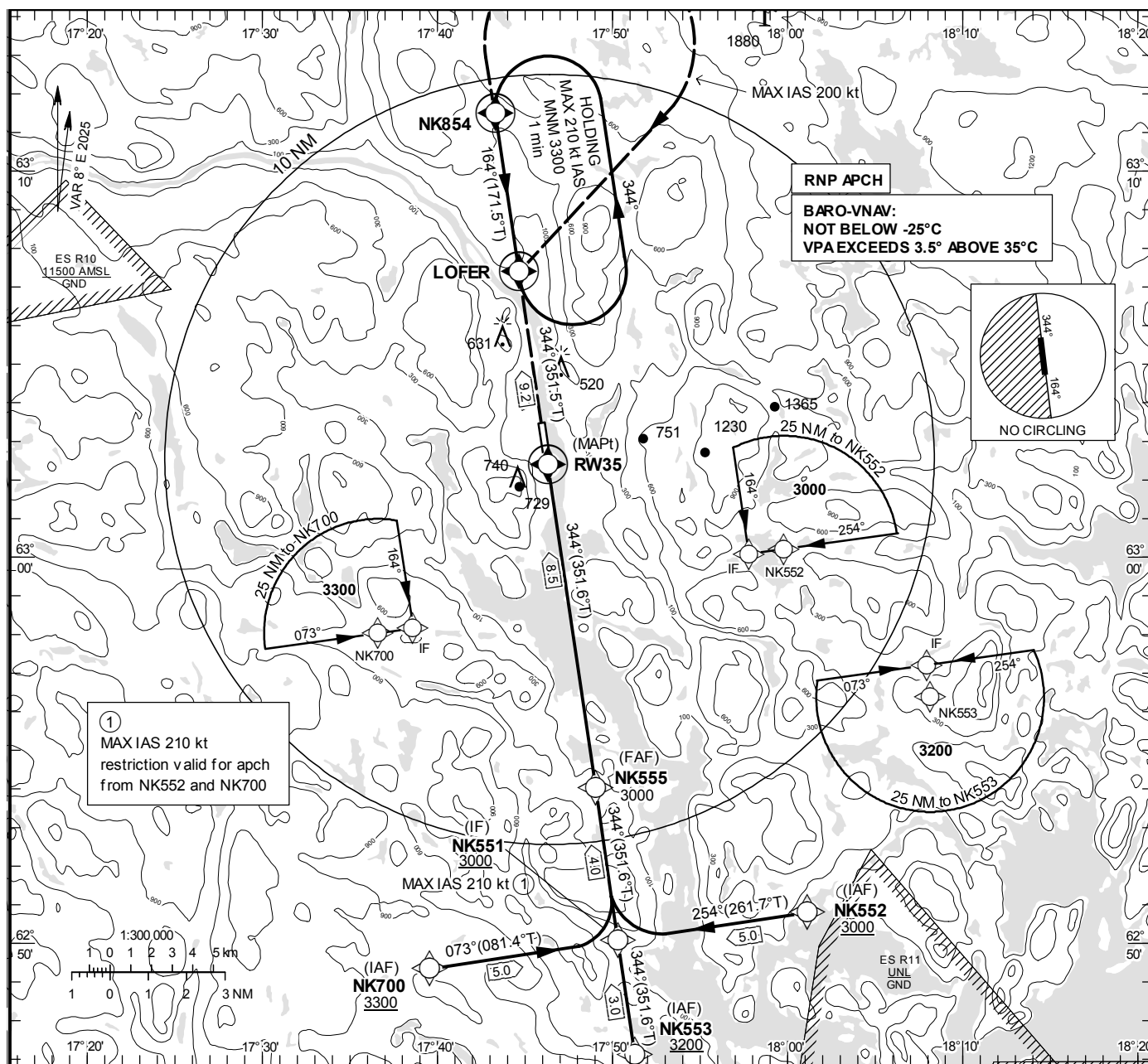


INSTRUMENT
APPROACH
CHART – ICAO

THR ELEV 23.5 ft, AD ELEV 36 ft
OCH are related to THR.
BRG are MAG (True).
ALT, HGT and ELEV in ft.

KRAMFORS
INFORMATION

122.155



CHANGE: Editorial

KRAMFORS-SOLLEFTEÅ**RNP RWY 35 via NK552**

Path Desc	Waypoint Identifier	Fly-over	Course °M(°T)	Dist (NM)	Turn Dir	Altitude	Speed	VPA/ RDH	Rec Navaid	Navigation Specification
IF	NK552	-	-	-	-	+3000	-	-	-	RNP APCH
TF	NK551	-	254°(261.7°)	5.0	-	+3000	-210	-	-	RNP APCH

RNP RWY 35 via NK553

Path Desc	Waypoint Identifier	Fly-over	Course °M(°T)	Dist (NM)	Turn Dir	Altitude	Speed	VPA/ RDH	Rec Navaid	Navigation Specification
IF	NK553	-	-	-	-	+3200	-	-	-	RNP APCH
TF	NK551	-	344°(351.6°)	3.0	-	+3000	-	-	-	RNP APCH

RNP RWY 35 via NK700

Path Desc	Waypoint Identifier	Fly-over	Course °M(°T)	Dist (NM)	Turn Dir	Altitude	Speed	VPA/ RDH	Rec Navaid	Navigation Specification
IF	NK700	-	-	-	-	+3300	-	-	-	RNP APCH
TF	NK551	-	073°(081.4°)	5.0	-	+3000	-210	-	-	RNP APCH

Path Desc	Waypoint Identifier	Fly-over	Course °M(°T)	Dist (NM)	Turn Dir	Altitude	Speed	VPA/ RDH	Rec Navaid	Navigation Specification
IF	NK551	-	-	-	-	+3000	-	-	-	RNP APCH
TF	NK555	-	344°(351.6°)	4.0	-	@3000	-	-	-	RNP APCH
TF	RW35	Y	344°(351.6°)	8.5	-	@74	-	-3.25/50	-	RNP APCH
TF	NK854	Y	344°(351.5°)	9.2	-	-	-	-	-	RNP APCH
DF	LOFER	Y	-	-	R	+3300	-200	-	-	RNP APCH

ESNK Holding LOFER

Path Desc	Waypoint Identifier	Fly-over	Course °M(°T)	Dist (NM)	Turn Dir	Altitude	Speed	VPA/ RDH	Rec Navaid	Navigation Specification
HM	LOFER	Y	164°(171.5°)	-	L	+3300	-210	-	-	RNP 1

FAS Data Block

RNP RWY 35

Input data

Operation Type	0
SBAS Provider	1 (EGNOS)
Airport Identifier	ESNK
Runway	35
Runway Letter	0 (None)
Approach PerformanceDesignator	0
Route Indicator	
ReferencePath Data Selector	0
ReferencePathIdentifier	E35A
LTP/FTP Latitude	630222.9940N
LTP/FTP Longitude	0174618.3560E
LTP/FTP Ellipsoidal Height (metres)	33.1
FPAP Latitude	630328.3595N
Delta FPAP Latitude (seconds)	65.3655
FPAP Longitude	0174556.9445E
Delta FPAP Longitude (seconds)	-21.4115
ThresholdCrossingHeight	50.0
TCH UnitsSelector	0 (feet)
GlidepathAngle (degrees)	3.25
Course Width (metres)	105.00
Length Offset (metres)	48
HAL (metres)	40.0
VAL (metres)	50.0

Output data

Data Block	10 0B 0E 13 05 23 00 00 01 35 33 05 24 C0 0D 1B E8 76 A0 07 4B 15 AB FE 01 B9 58 FF F4 01 45 01 64 06 C8 FA 5D A5 95 95
Calculated CRC Value	5DA59595

RequiredAdditional Data

ICAO Code	ES
LTP/FTP Orthometric Height (metres)	7.2